



GMT MONTHLY MEMBERSHIP PROGRESS REPORT

Results as of: 6/30/2018

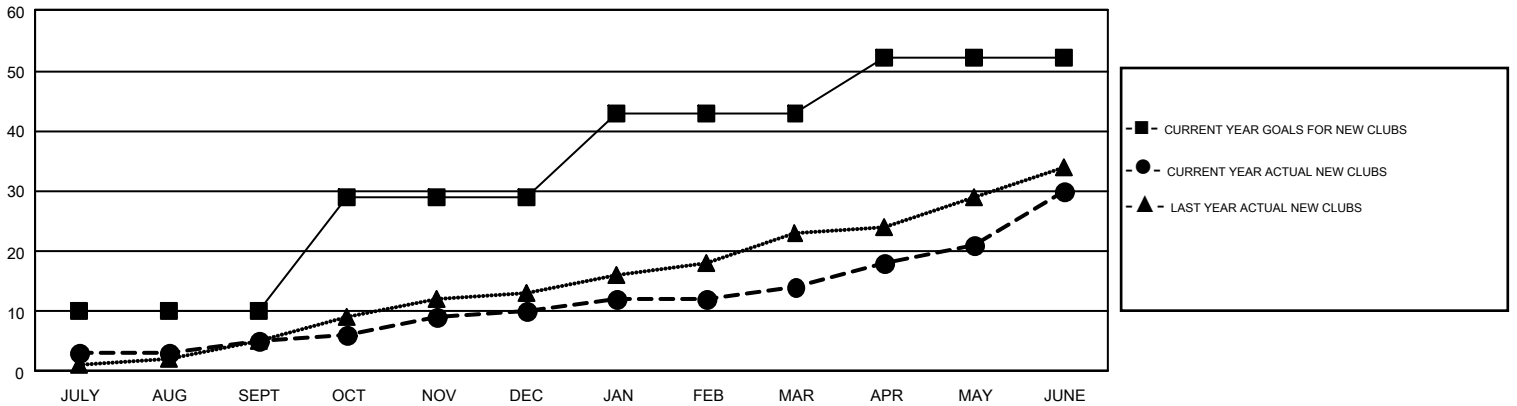
GMT Constitutional Area 1, Group F

GMT: OPEN

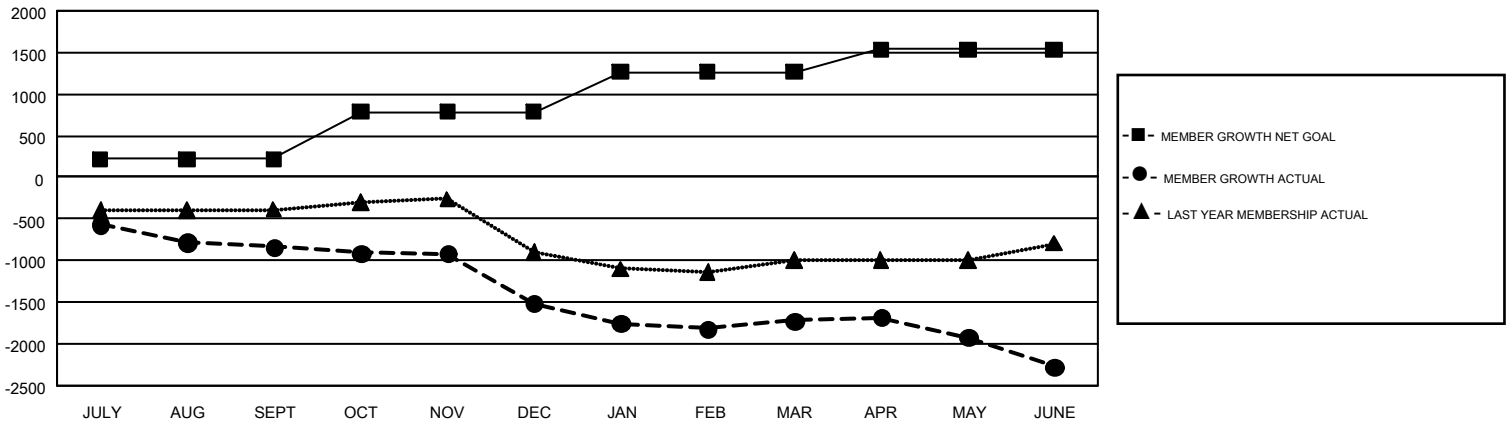
REPORT DOES NOT INCLUDE CLUBS IN UNDISTRICTED AREAS.

Clubs				Members			
RESULTS FOR 2017-2018				RESULTS FOR 2017-2018			
QUARTER	NEW CLUB GOAL	NEW CLUBS	DROPPED CLUBS	QUARTER	MEMBER GROWTH NET GOAL	MEMBER GROWTH ACTUAL	DROPPED MEMBERS ACTUAL (including transfers)
JULY/AUG/SEPT	10	5	16	JULY/AUG/SEPT	220	1,395	2,054
OCT/NOV/DEC	19	5	25	OCT/NOV/DEC	568	1,278	1,866
JAN/FEB/MAR	14	4	9	JAN/FEB/MAR	480	1,545	1,620
APR/MAY/JUNE	9	16	20	APR/MAY/JUNE	265	2,535	2,894

GOALS AND ACTUAL NEW CLUBS CUMULATIVE



GOALS AND ACTUAL MEMBERS CUMULATIVE



DROPPED CLUBS: 70	1,102 CLUBS OF 1,669 ADDED 1 OR MORE NEW MEMBERS	GENDER DISTRIBUTION MALE 29,822 (67.18%) FEMALE 14,571 (32.82%)
DROPPED MEMBERS DECEASED 613 CLUB CANCELLED 463 OTHER 7,356 TOTAL 8,432	CLICK HERE FOR CUMULATIVE MEMBERSHIP DATA	TOTAL FAMILY UNIT MEMBERS 0 FAMILY MEMBERS PAYING HALF DUES 0